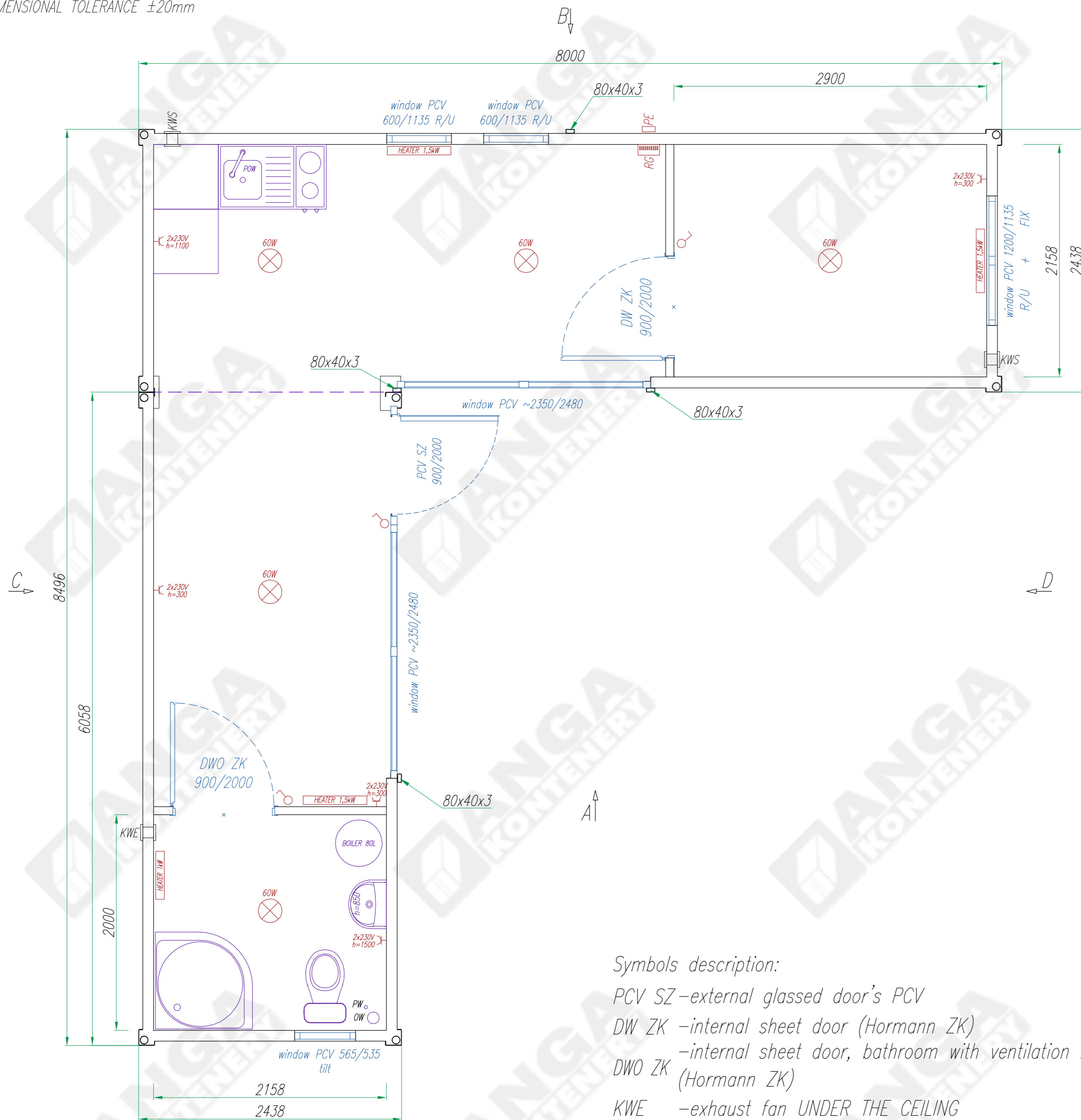


DIMENSIONAL TOLERANCE ±20mm



Symbols description:

- PCV SZ – external glassed door's PCV
- DW ZK – internal sheet door (Hormann ZK)
- DWO ZK – internal sheet door, bathroom with ventilation holes (Hormann ZK)
- KWE – exhaust fan UNDER THE CEILING
- KWS – gravitational ventilation grate UNDER THE CEILING
- OW – water outflow $\varnothing 110$, exit through the floor
- PW – cold water connection, culvert in the floor, connection inside the containers
- RG – electric distribution box (under the ceiling)
- PE – electrical connection (hermetic box on the outside wall)

This drawing is property of "ANGA" sp. z o.o. Kartuska 393, 80-125 Gdańsk, Poland and shall not be copied by any process, shall not be shown to third party, nor shall it be used for production documentation for any other account without our permission in writing.

ROOF
galvanized and painted, trapezoid sheet plate T35, #0,7mm
mineral wool #80mm
sandwich panels in metal plates with polyurethane core, panel thickness: 100mm, galvanized, covered with polyester coating

EXTERNAL WALLS
sandwich panels in metal plates with polyurethane core, panel thickness: 100mm, galvanized, covered with polyester coating

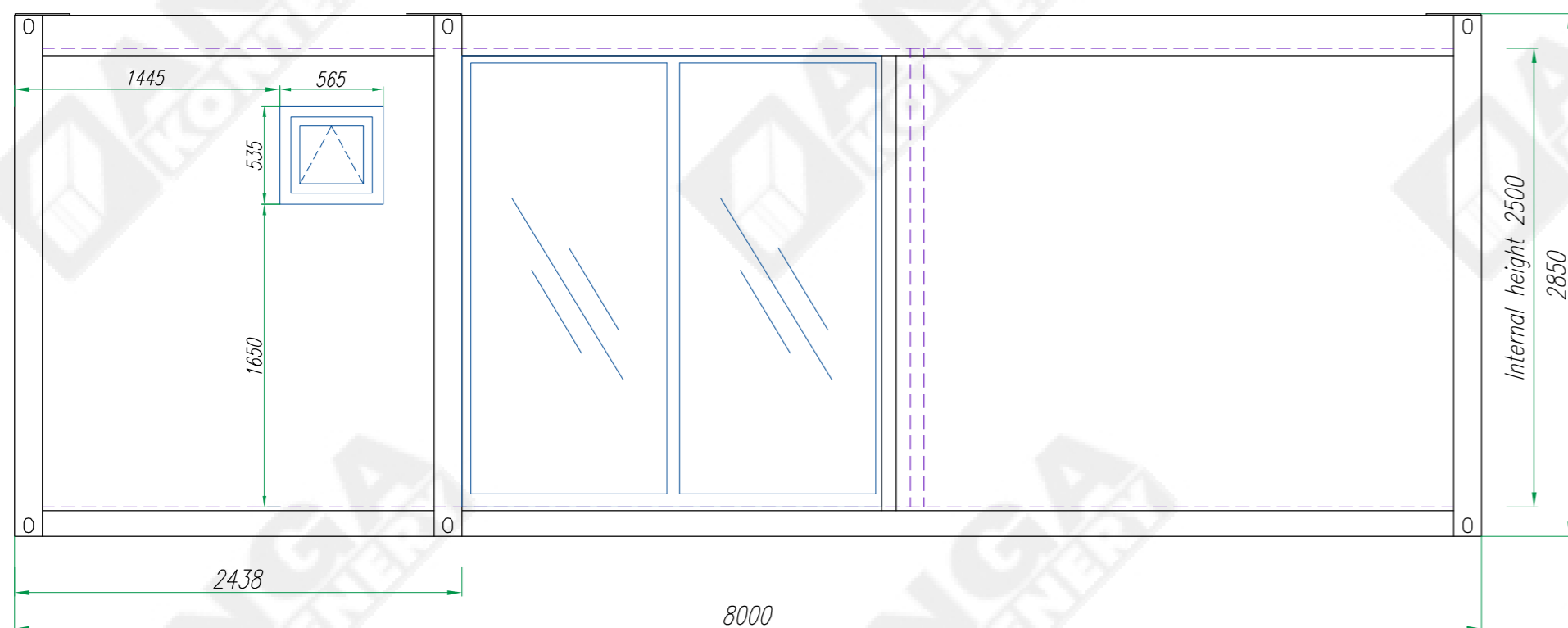
INTERNAL WALLS
sandwich panels in metal plates with styrofoam core, panel thickness: 75mm, galvanized, covered with polyester coating

FLOOR
covering PCV Tarkett Rekord
MPF plate #22, sanitary part – cement-bonded plate Cetris
mineral wool/styrofoam #120
cold formed steel crossmembers
bottom: galvanized metal sheet #0,5

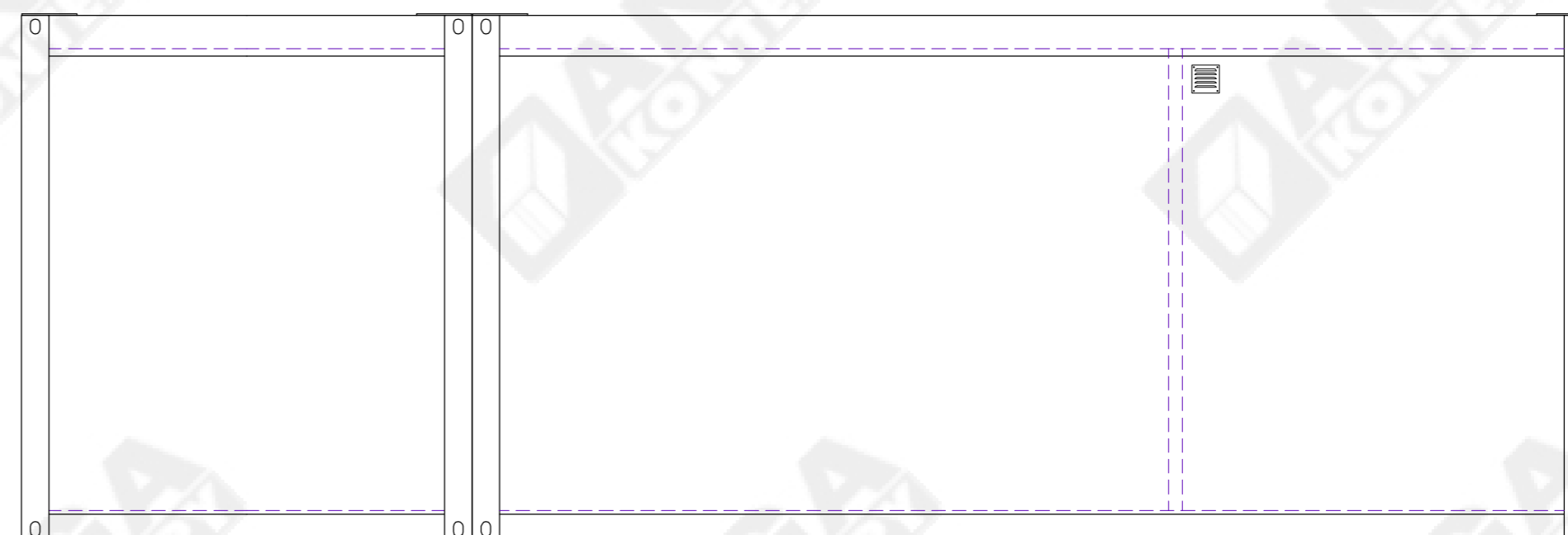
Konstruował Designed	Michał Urbanowicz	01.03.18	Nazwa wyrobu/Product name	Masa wyrobu kg Total weight kg							
Sprawdził Checked			Set of residential container								
Zatwierdził Approved	Radostaw Zdun	01.03.18	Typ wyrobu/Product type	Format							
			Set of 2 pcs of residential containers type KP100 PUR	A3							
<table border="1"> <tr> <th>Nazwisko/Name</th> <th>Data/Date</th> <th>Podpis/Signature</th> </tr> <tr> <td></td> <td></td> <td></td> </tr> </table>			Nazwisko/Name	Data/Date	Podpis/Signature				Nr rysunku/Drawing no.	Edycja Revision	Nr arkusza Sheet no.
Nazwisko/Name	Data/Date	Podpis/Signature									
			Z2M-KP100-PUR-01	01	1/2						

ANGA sp. z o.o.
ul. Kartuska 393
80-125 Gdańsk
anga@anga.pl

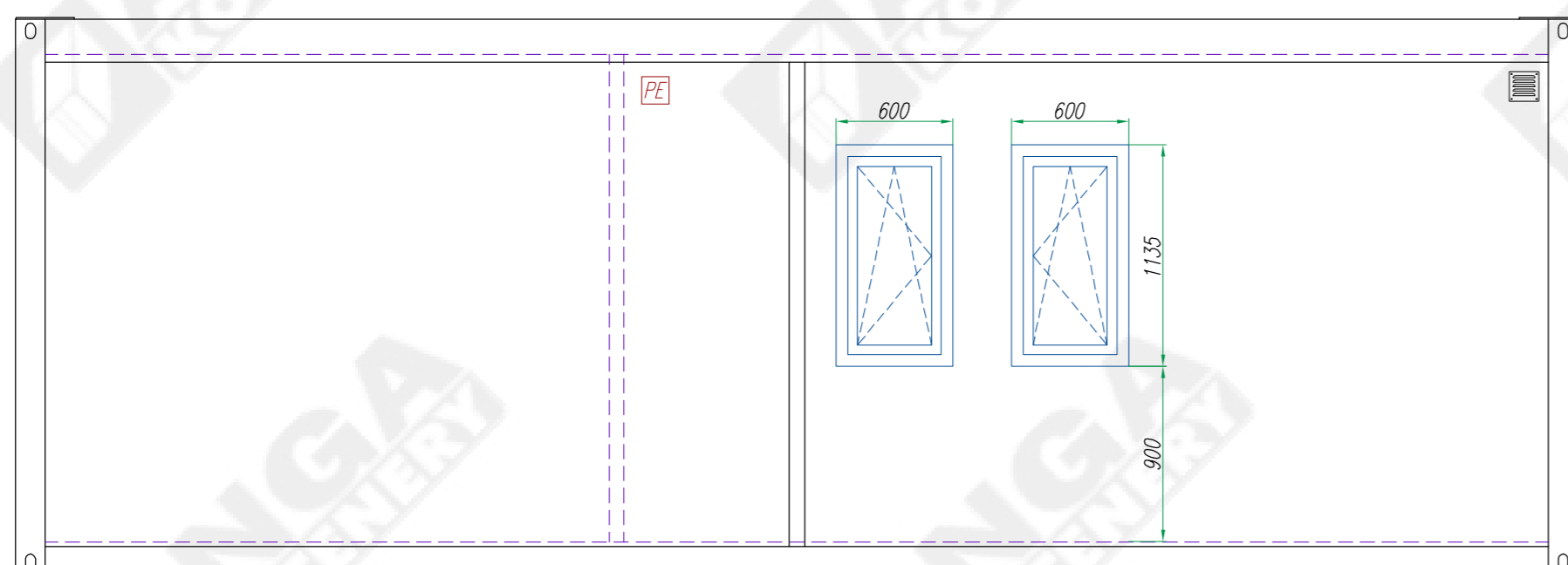
View A



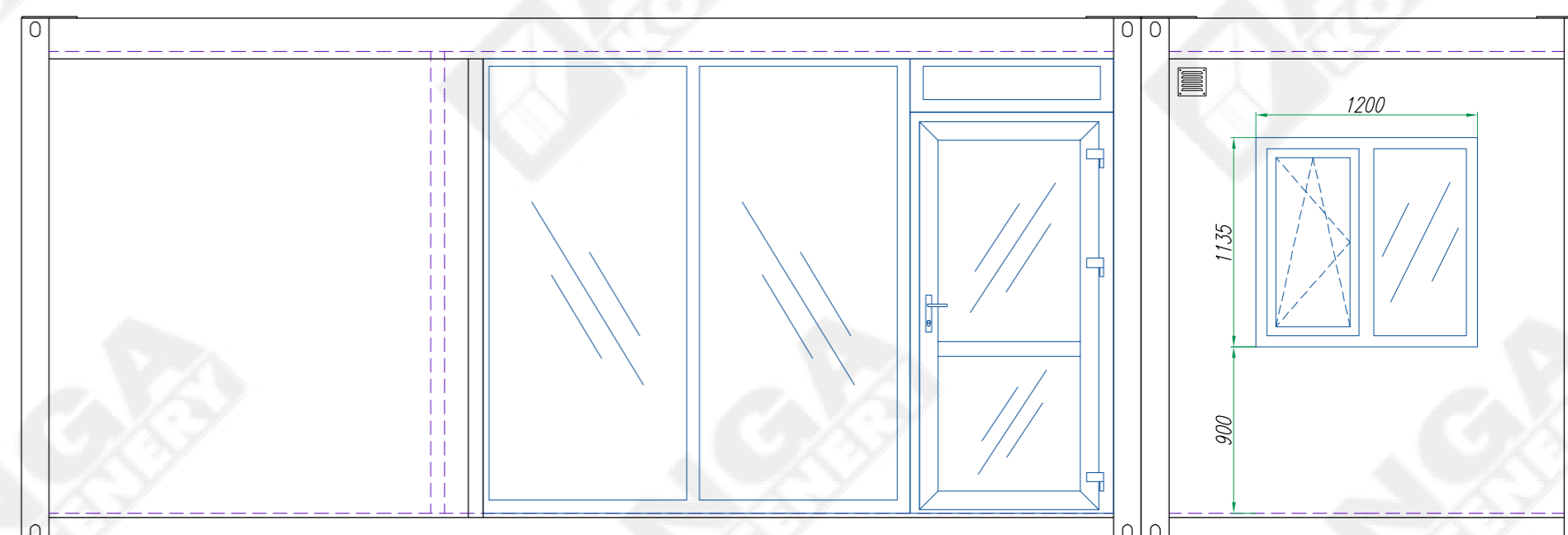
View C



View B



View D



ROOF

galvanized and painted, trapezoid sheet plate T35, #0,7mm
 mineral wool #80mm
 sandwich panels in metal plates with polyurethane core,
 panel thickness: 100mm, galvanized, covered with polyester
 coating

INTERNAL WALLS

sandwich panels in metal plates with styrofoam core,
 panel thickness: 75mm, galvanized, covered with polyester
 coating

EXTERNAL WALLS

sandwich panels in metal plates with polyurethane core,
 panel thickness: 100mm, galvanized, covered with polyester
 coating

FLOOR

covering PCV Tarkett Rekord 42
 OSB3 plate #22, sanitary part – cement-bonded plate
 Cetris
 mineral wool/styrofoam #120
 cold formed steel crossmembers
 bottom: galvanized metal sheet #0,5

This drawing is property of "ANGA" sp. z o.o. Kartuska 393,
 80-125 Gdańsk, Poland and shall not be copied
 by any process, shall not be shown to third party, nor shall
 it be used for production documentation for
 any other account without our permission in writing.

Konstruował Designed	Michał Urbanowicz	01.03.18		Nazwa wyrobu/Product name	Masa wyrobu kg Total weight kg
Sprawdził Checked				Set of residential container	
Zatwierdził Approved	Radosław Zdun	01.03.18		Typ wyrobu/Product type	Format
				Set of 2 pcs of residential containers type KP100 PUR	A3
	Nazwisko/Name	Data/Date	Podpis/Signature	Nr rysunku/Drawing no.	Edycja Revision
				Z2M-KP100-PUR-01	01
					Nr arkusza Sheet no.
					2/2



ANGA sp. z o.o.
 ul. Kartuska 393
 80-125 Gdańsk
 anga@anga.pl